

# CERTIFICATE OF LOCATION OF GOVERNMENT CORNER

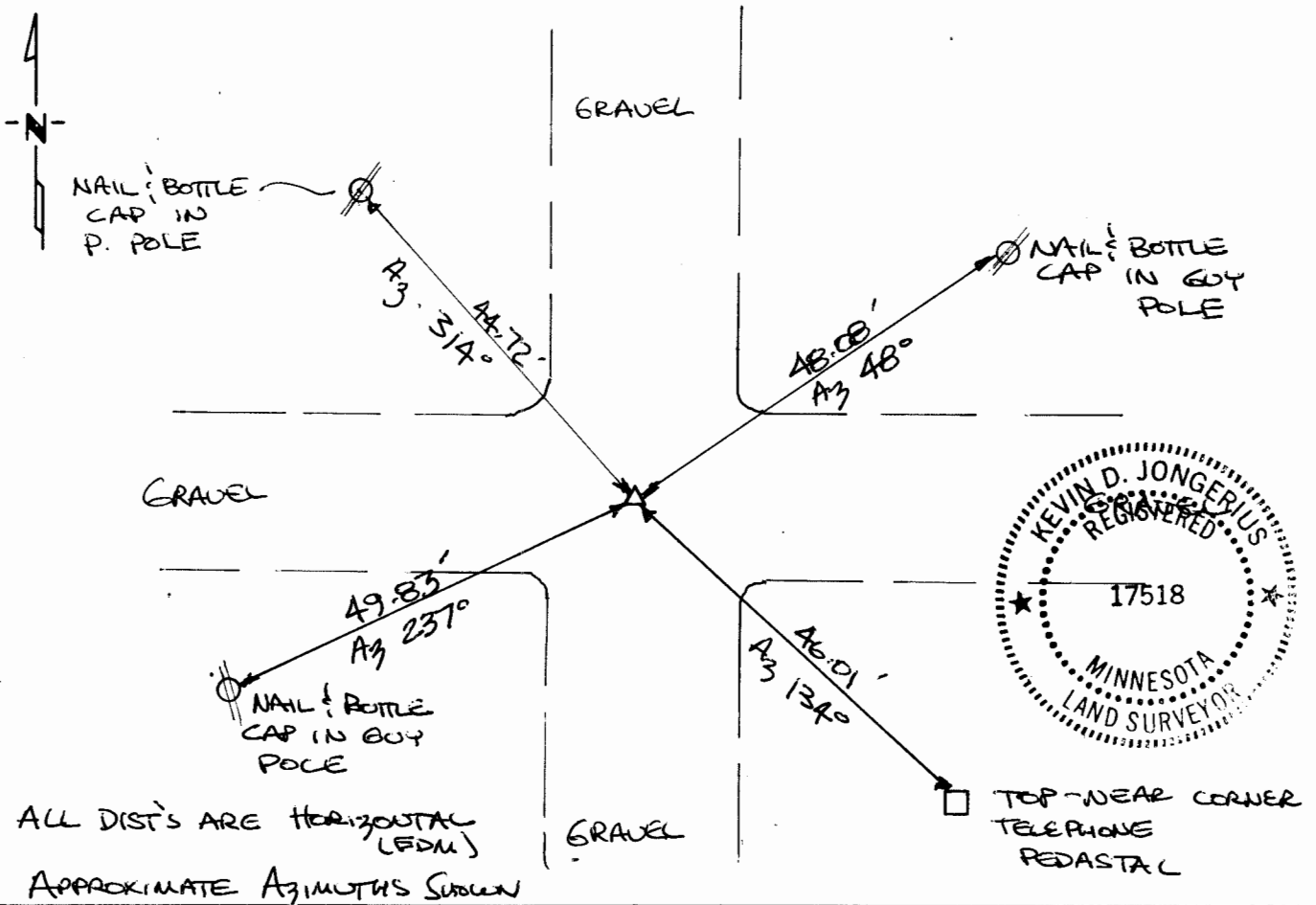
NW Corner of Section 20, Township 105, Range 42, 5<sup>th</sup> P.M.

STATE OF MINNESOTA, County of MURRAY

At the corner location shown on the sketch:

- On 11-2-92 found a 3/4" x 6" LONG REBAR 6" DEEP  
DATE (GRAVEL SURFACE)
- left monument as found,  lowered monument,  removed monument (explain)
- On 11-2-92 placed a 1/2" x 30" REBAR IN SAME LOCATION  
DATE - 6" DEEP (GRAVEL SURFACE)

### SKETCH OF REFERENCE TIES



Statement of evidence relative to this corner location is on back of page.

I hereby certify that this document and the data contained herein was prepared by me or under my direct supervision.

Kevin D. Jongerius 12-8-92  
SIGNATURE DATE  
 Kevin D. Jongerius  
 Registration No. 17518  
 Land Surveyor,  Professional Engineer  
 County Surveyor,  County Engineer

#### OFFICE OF THE COUNTY RECORDER

County of MURRAY  
 I hereby certify that this document was filed in the Co. Recorders office at \_\_\_\_\_ .M. on the \_\_\_\_\_ day of JAN 14 1993 A.D., 19\_\_\_\_  
 County Recorder J. Ann V. Johnson  
 By \_\_\_\_\_, Deputy  
 DOCUMENT NO. \_\_\_\_\_